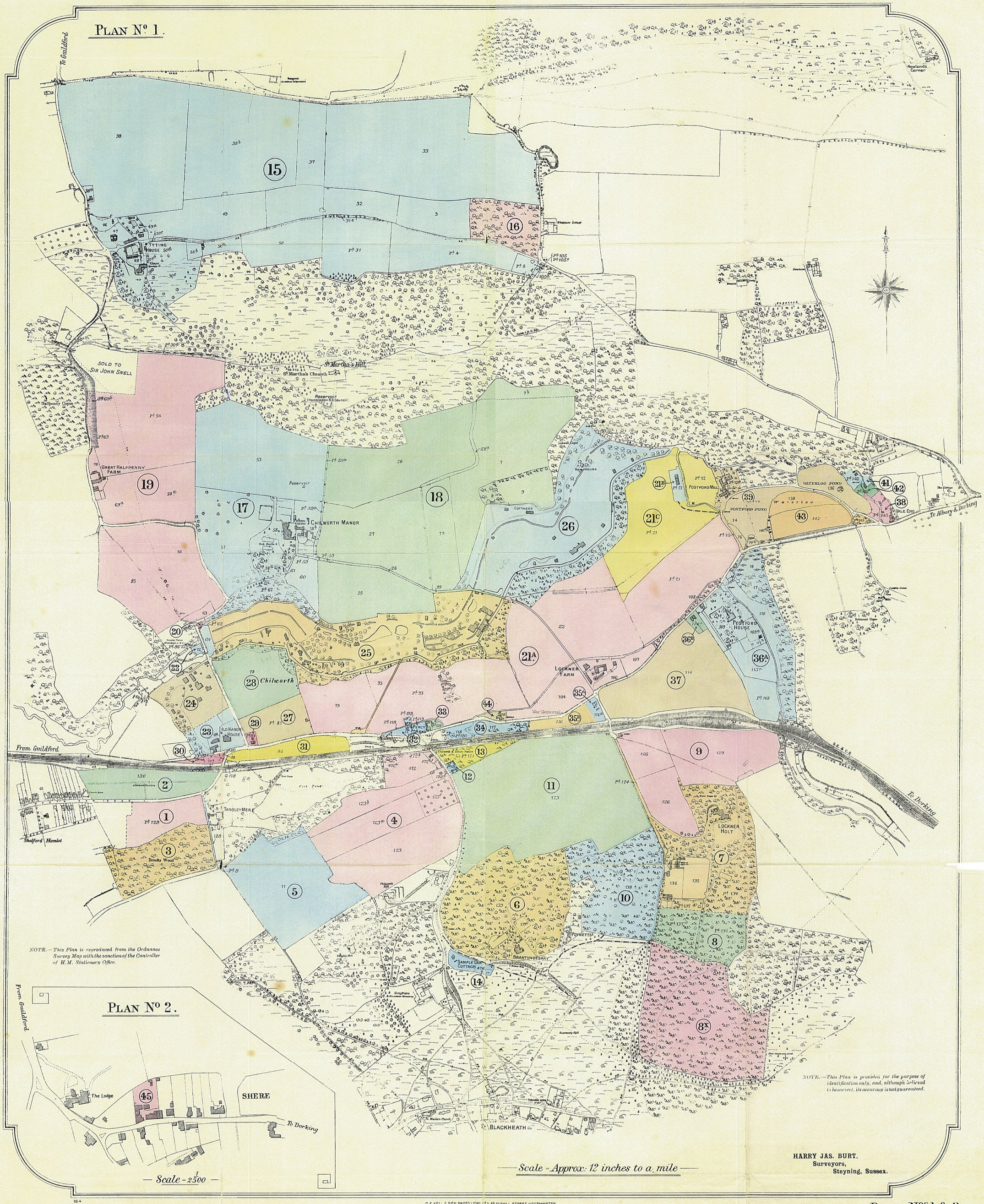


1922 Albury Estate Sale, Plans 1-7, maps.

1922 Albury Estate Sale catalogue:

<http://www.alburyhistory.org.uk/attachments/File/1922%20Albury%20Estate%20SALE.pdf>



PLAN N° 1.

PLAN N° 2.

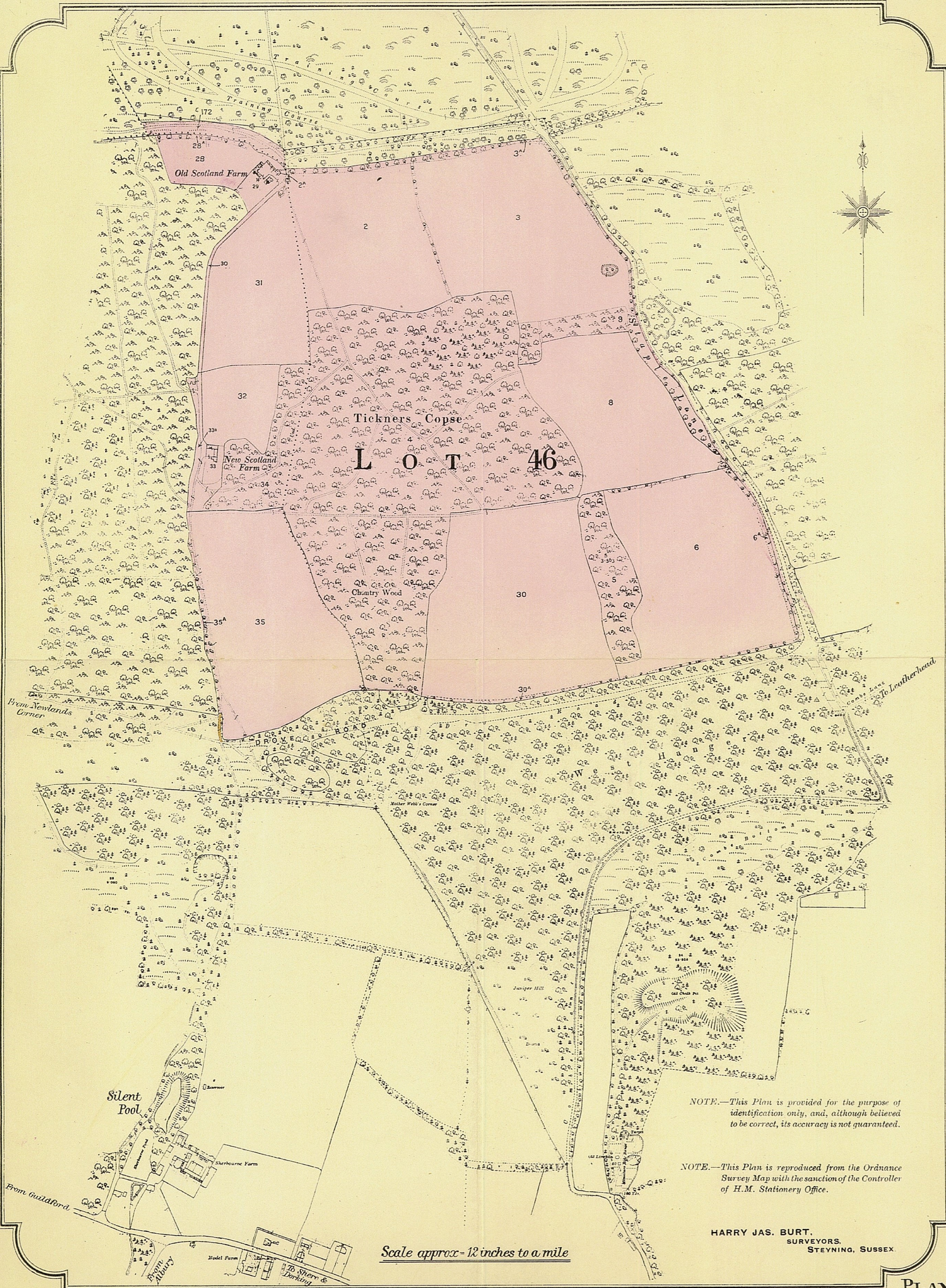
NOTE.—This Plan is reproduced from the Ordnance Survey Map with the sanction of the Controller of H.M. Stationery Office.

NOTE.—This Plan is provided for the purpose of identification only, and, although believed to be correct, its accuracy is not guaranteed.

Scale - 1/2500

Scale - Approx. 12 inches to a mile

HARRY JAS. BURT,
Surveyors,
Steyning, Sussex.



LOT 46

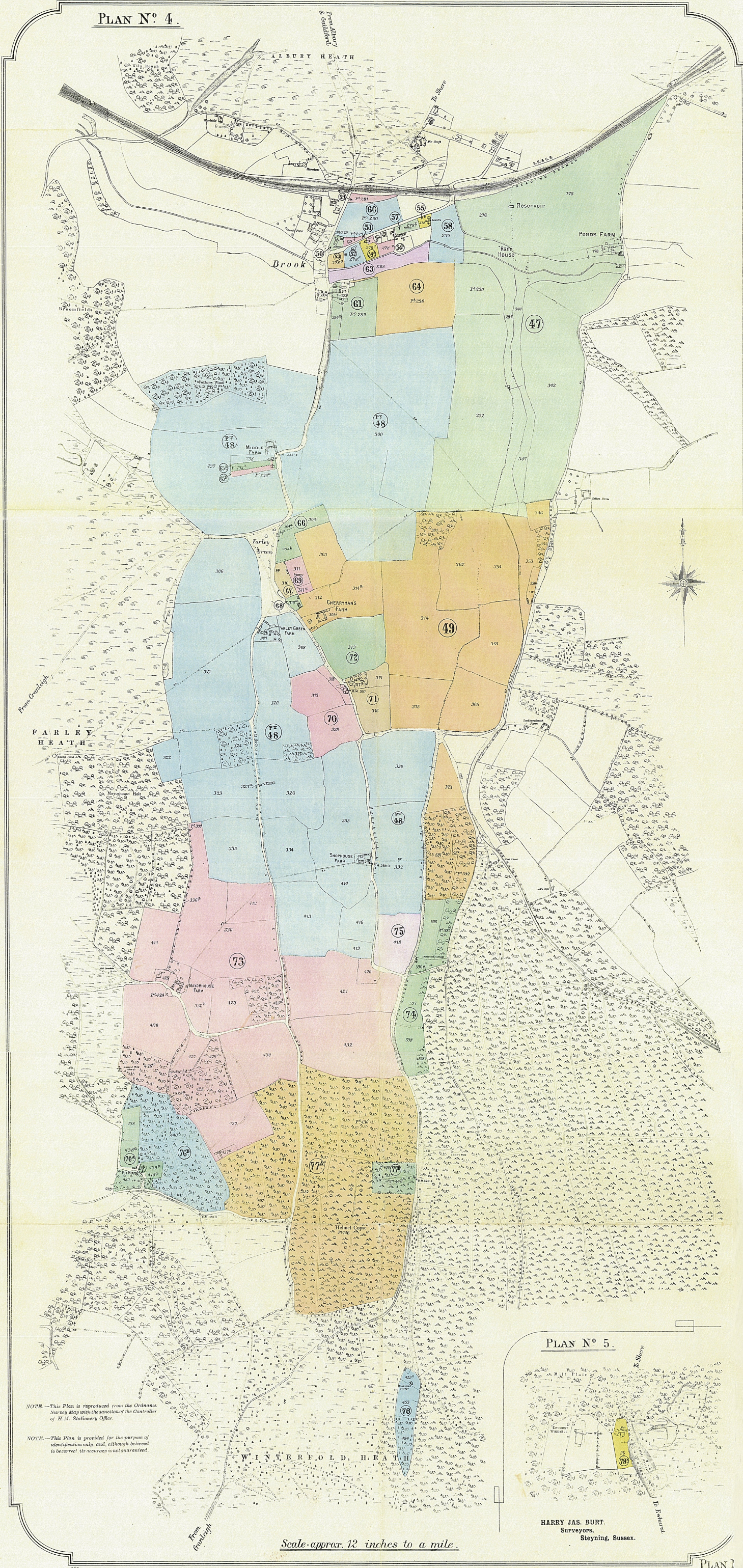
NOTE.—This Plan is provided for the purpose of identification only, and, although believed to be correct, its accuracy is not guaranteed.

NOTE.—This Plan is reproduced from the Ordnance Survey Map with the sanction of the Controller of H.M. Stationery Office.

HARRY JAS. BURT,
SURVEYORS,
STEYNING, SUSSEX.

Scale approx-12 inches to a mile

PLAN N° 4.



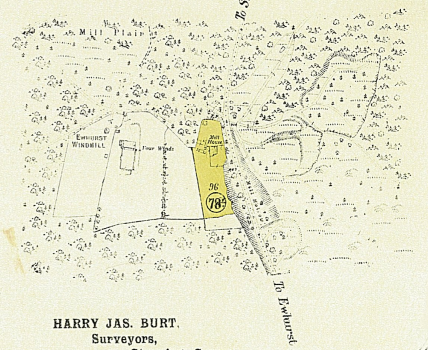
FARLEY HEATH

WINTERFOLD HEATH

NOTE.—This Plan is reproduced from the Ordnance Survey Map with the sanction of the Controller of H.M. Stationery Office.

NOTE.—This Plan is provided for the purpose of identification only, and although believed to be correct, its accuracy is not guaranteed.

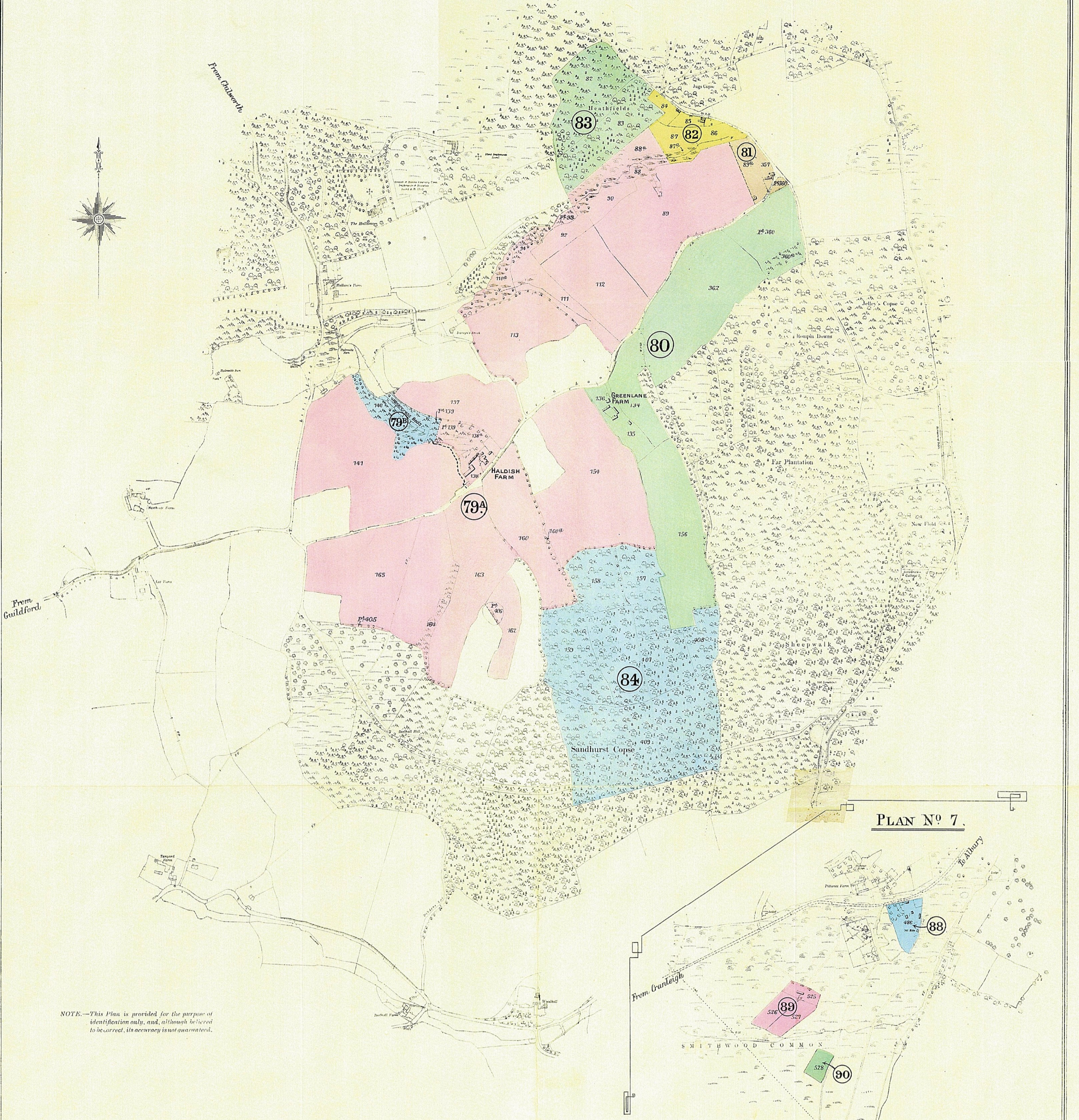
PLAN N° 5.



HARRY JAS. BURT,
Surveyors,
Steyning, Sussex.

Scale approx. 12 inches to a mile.

PLAN N^o 6.



PLAN N^o 7.

NOTE.—This Plan is provided for the purpose of identification only, and, although believed to be correct, its accuracy is not guaranteed.

NOTE.—This Plan is reproduced from the Ordnance Survey Map with the sanction of the Controller of H.M. Stationery Office.

Scale - Approx. 12 inches to a mile

HARRY JAS. BURT
SURVEYORS,
STEYNING, SUSSEX.

PLANS N^{os} 6 & 7.
Lots 79^A - 90