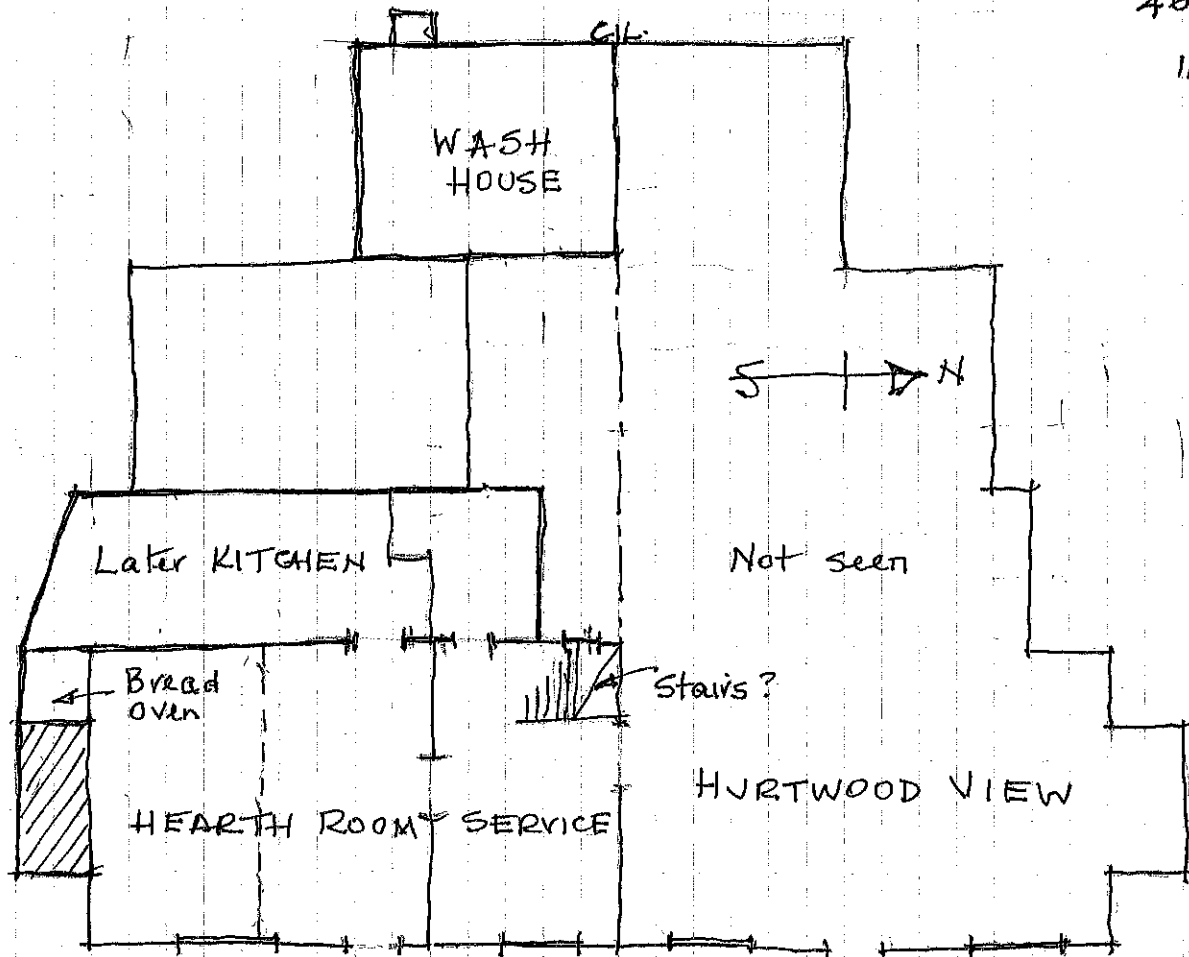


11/03



Well

An early/mid 17C. Timber framed 2 bay end chimney attached house, with stone & rendered walls; gabled tiled roof.

Similar to Quiller and The Cottage, Brook Lane. Square framing, down braces, stone noggings.

Probably added to Hurtwood View, which was built first, better quality, side purlin roof. Timber upper face to Elm End, partly wall galleted.

Elm End chimney rebuilt, bread oven turned to 18/19c kitchen 2 bedrooms upstairs, with slight partition between them. That over the hearth room had its ceiling lowered. Ceiling over other room probably modern. All rafters pegged.

Elm View is of lower quality than Hurtwood View, was it add as service end, or did some disaster necessitate its rebuild?