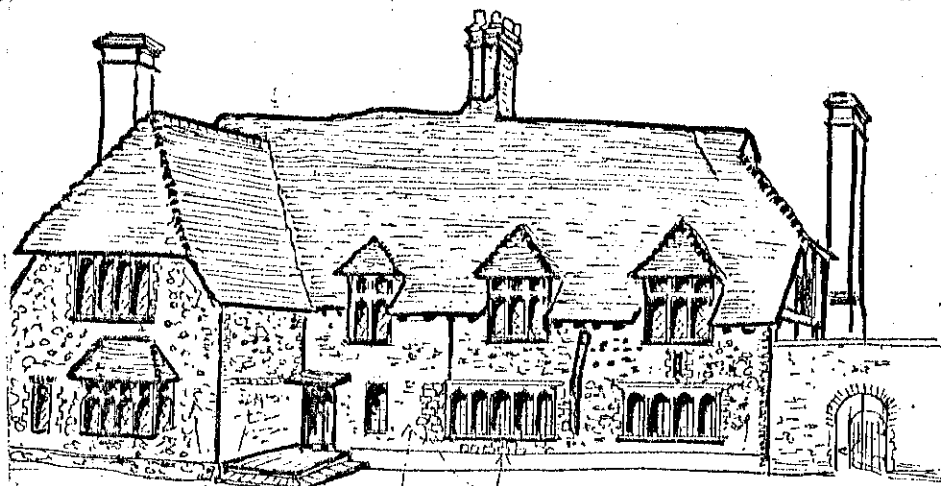


15 C. Four bay open hall house, with 2 bay open hall, solar jettied into hall; over parlour, and service bay. Long rapping panning braces. Crown post roof, later altered to side purlin.

In 16 C. half the open hall was floored over and a smoke bay formed.

In 17 C. hearth formed in this bay with stairs behind. Eastern end now half hipped, probably when roof altered. E. end looks later with square framing and "down" braces. It also has an added chimney at the end, of iron stone with galleting. S. side now cled in sandstone.

Joist points. Cellar under Parlour. Spine beam and joists chamfered with stepped stops. Joists in service room plain.



South Elevation
 Brick & sandstone
 Flint & wood half
 Sandstone blocks
 D.M. HERRIDGE
 9.78