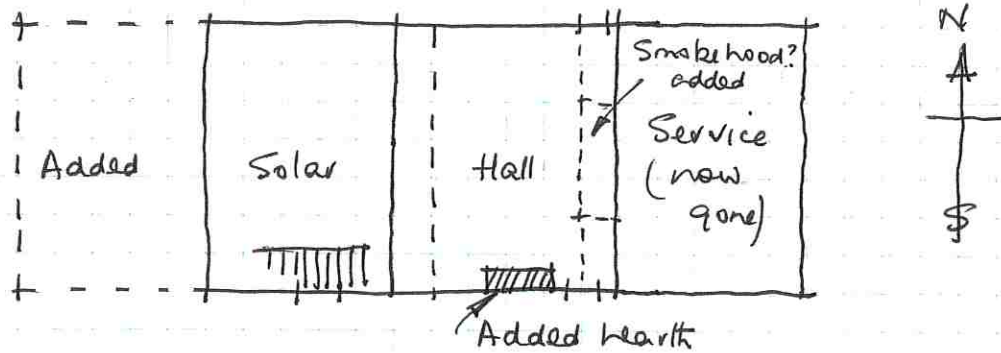


Summary by Caroline Martin - Albury History Society - alburyhistory.org.uk

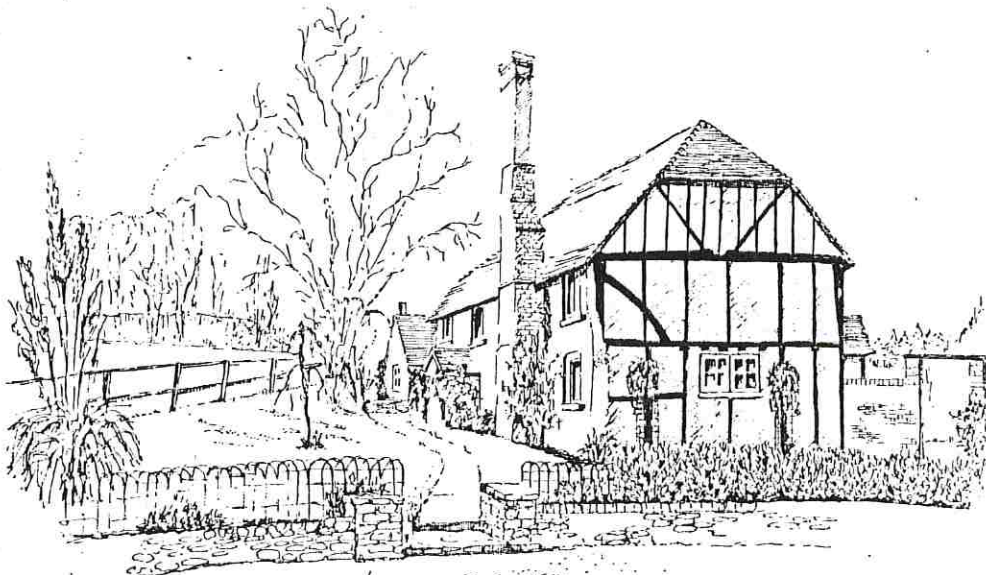


3 bay mediaeval timber framed open hall house. Internal jetty. Crown post roof, now half hipped. Service end gone. Bay added to West, possibly stone range store, built up in brick. Curved down broes. Ground floor bricked to S., stone to N.

Jetty beam & wall plates have flat stepped stops. In 16 C. hall floored over - open beam has curved stepped stops. Joists in cross passage have lamb's tongue stops - later. ? Open at first for smoke hood, then floored later. Probably faced N. to farm yard.

Roof over open hall converted to clasped purlin, collar purlin removed

By 1831 Shophouse owned only one field, though it has a fine 6 bay 19 C Barn, gabled, weather boarded, tiled with clasped purlin roof.



Thomas Wellave

Jan 1981

The "internal" East end