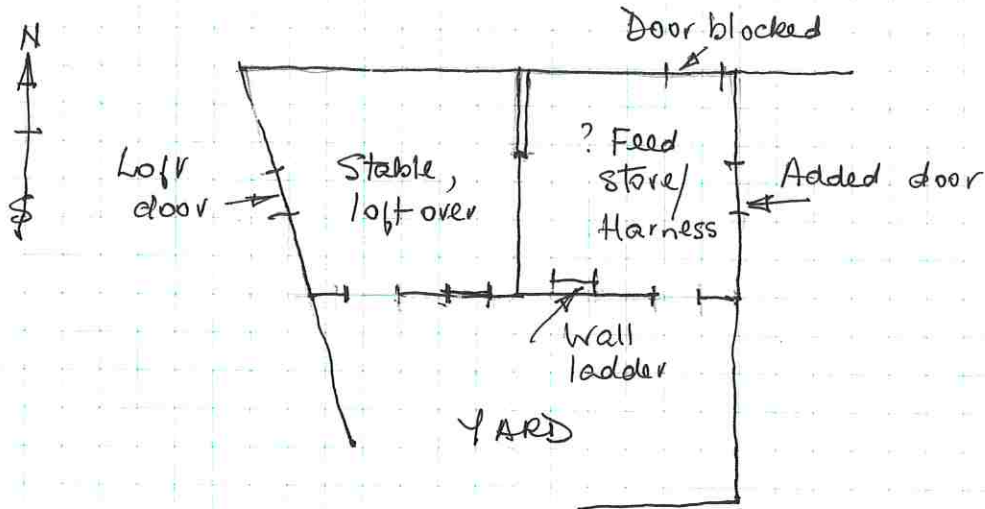


11/84



A mid 19C. stable with loft over and harness room, with added floor over, replacing an earlier building. Of stone, with some wall weatherboarded, 2 stable doors & window facing yard. Gabled roof (gables boarded), with purlins, & raking. Queen struts & central tie beam. Access to loft by wall ladder. High loft door to West. North door blocked, with added door to Harness Room loft to East. S.E. door reduced in width. Stall division (? added) in centre.

Later used for storing potatoes and for storing and grinding corn by tractor. Now converted to domestic accommodation.

